



Crewes Lane | | Warlingham | CR6 9NS

£1,500 Per Calendar Month

BOND & SHERWILL
EST. 1908

Crewes Lane |
Warlingham | CR6 9NS
£1,500 Per Calendar Month

Benefiting from an ideal location close to the village of Warlingham, this two-bedroom first-floor maisonette is ideal for anyone who wants quick and easy access to shops, transport and popular schools.

Internally, the property compromises of two good-size bedrooms, kitchen, bathroom and living room. Externally, the property includes a shed and own rear garden.

Crewes Lane is located within ideal proximity to a range of leisure facilities and green spaces including Birch Selsdon Golf Course, Purley Downs Golf Club, Selsdon Nature Reserve, Sanderstead Pond, Kingsmead Equestrian Centre and Riddlesdown Common.

Popular local schools include Gresham Primary School, Atwood Primary School and Sanderstead Park Nursery while independent schools include Cumnor House Boys' School, Warlingham Park and Croydon High School.

Transport into Central London can be accessed at Whyteleafe and Upper Warlingham Railway Stations while the M25 can be joined at Junction 6 at Godstone. Both Warlingham & Hamsey Green offers a range of local shops and restaurants.



Entrance Hall

Landing

Master Bedroom

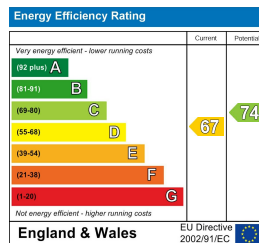
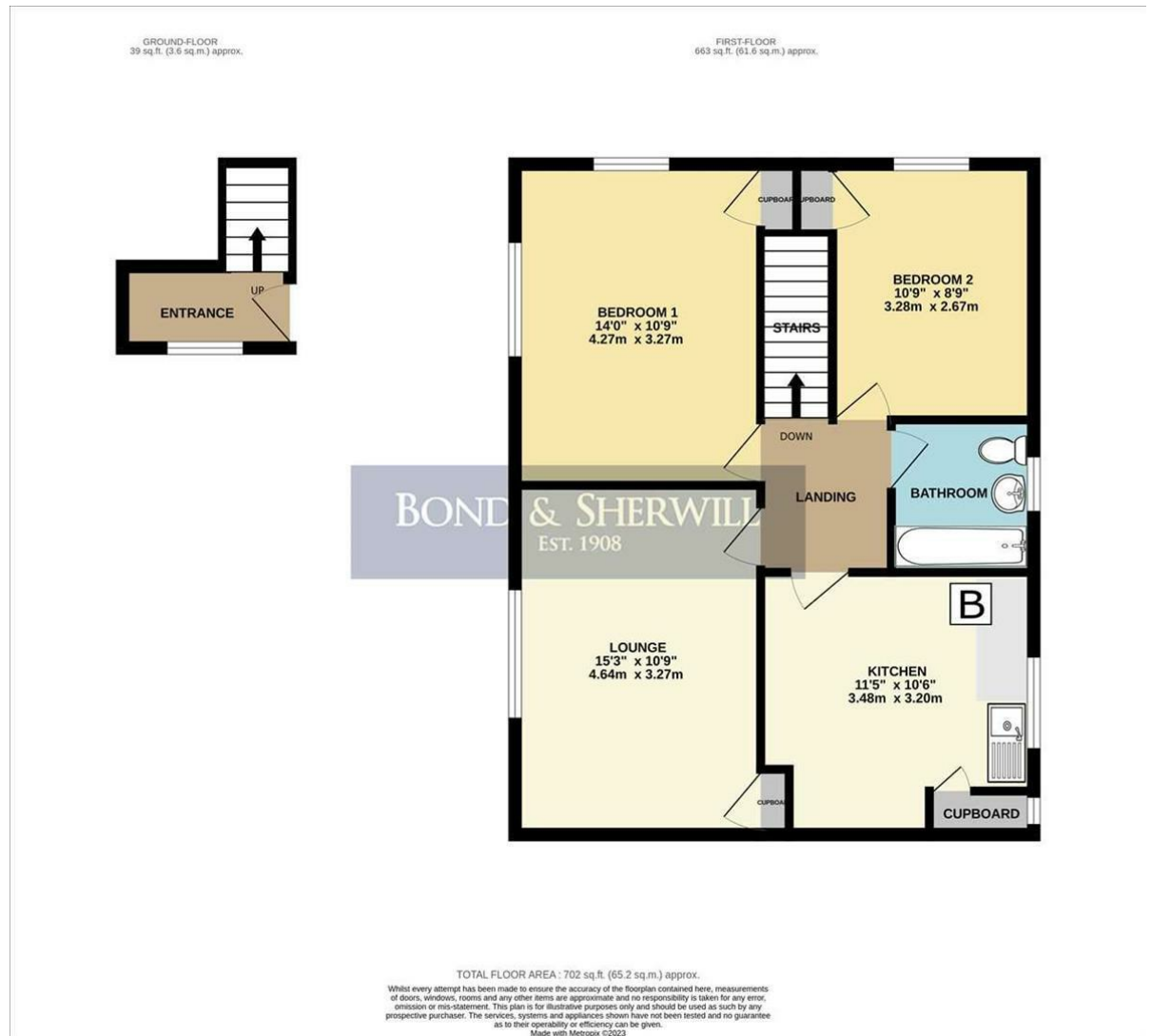
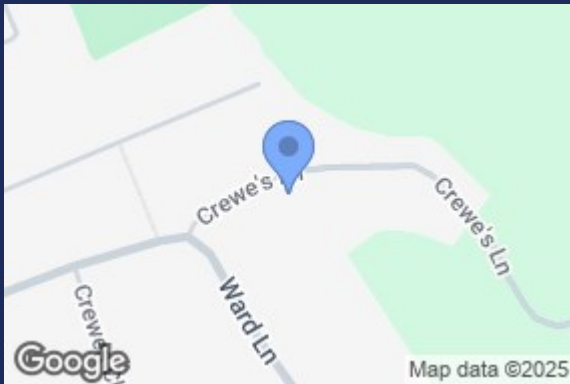
Living Room

Kitchen

Bathroom

Bedroom Two





Bond & Sherwill
134 Brighton Road
Coulsdon
Surrey
CR5 2ND
020 8660 0189
lettings@bondandsherwill.co.uk